

2020

- /

- , 2018

15.6

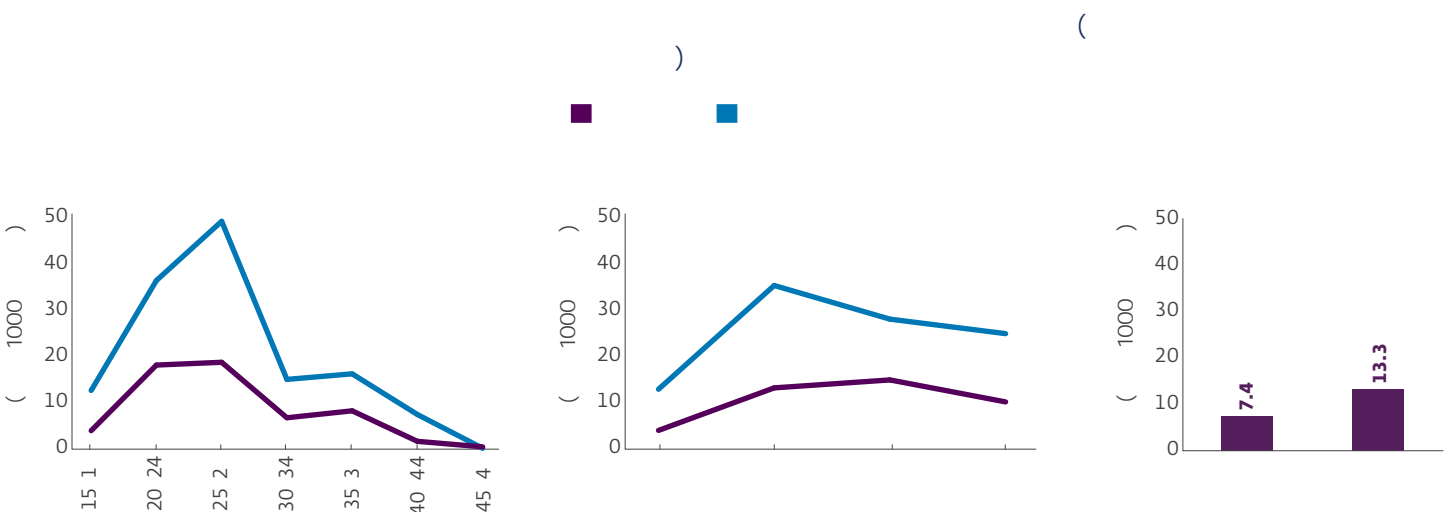
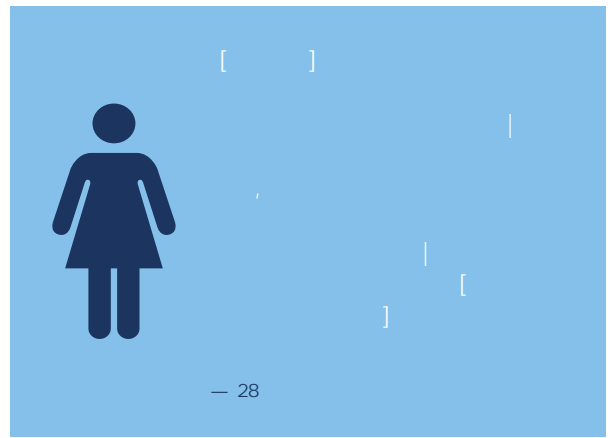
1971,

|'

2015

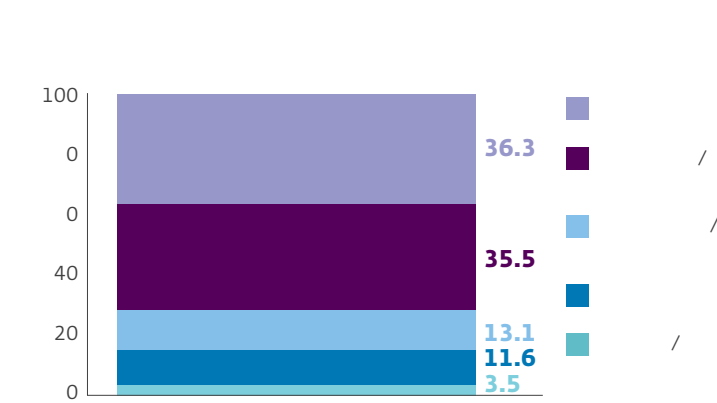
		(1000)
	7.0	15.6
	3.3	12.1
*	9.5	23.6
	177,525	441,011

*



() 16% , 36% /

28% | 36%



2018/
 15-49 (É: - 0%)
 4933 35 (98.3%)
 5832 147 (98.4%)
 268 35 (98.0%)