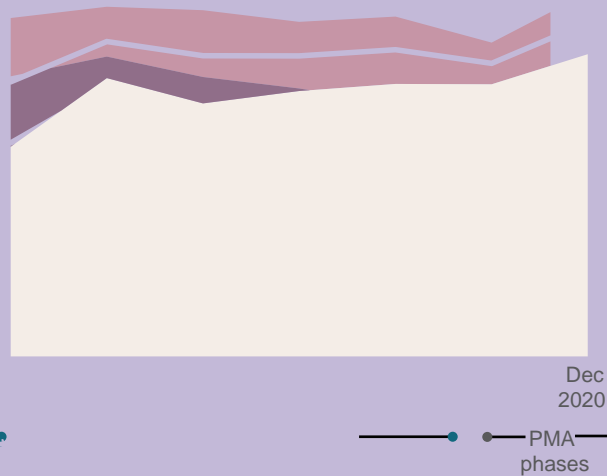




## CONTRACEPTIVE PREVALENCE by method type

Percent of all women age 15-49 currently using contraception by method type (PMA Phase 2 n=779)







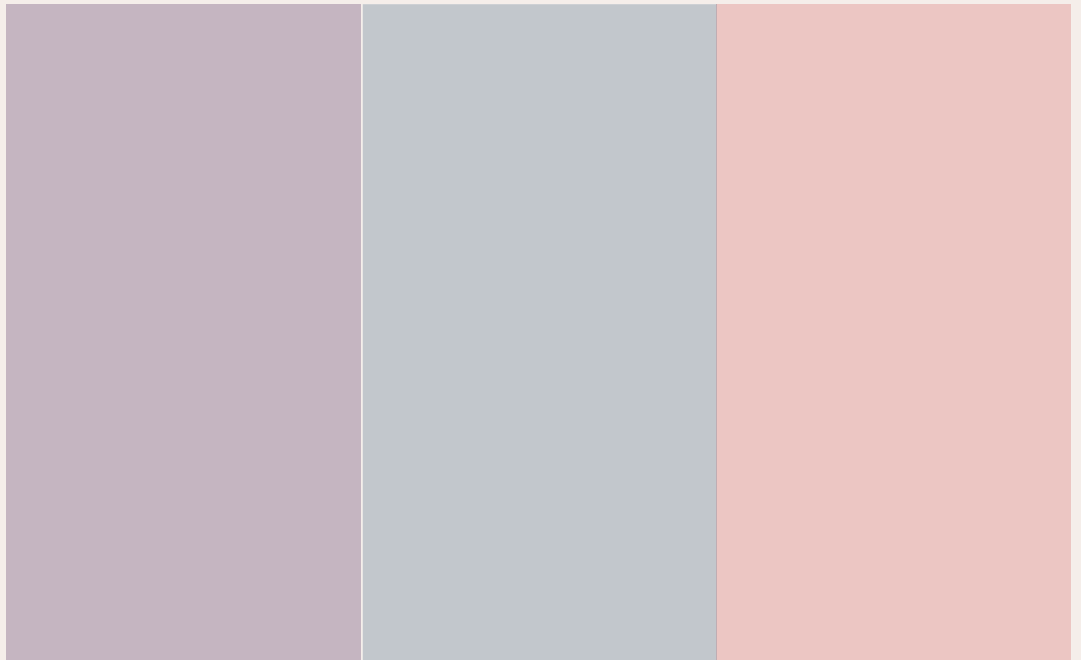
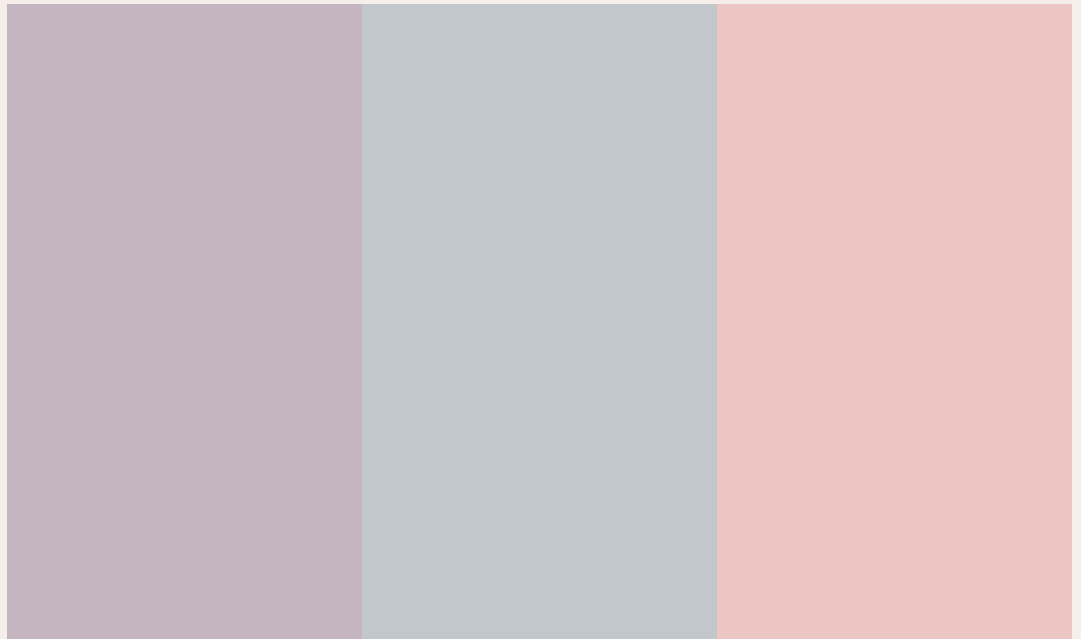




not offered



## Tables: Contraceptive prevalence and unmet need



urban-rural strata. The results are county-level representative. Data were collected between November and December 2020 from 765 households (97.9% response rate), 779 females age 15-49 (99% response rate), and 97 facilities (100% completion rate). For sampling information and full data sets, visit [data.ghs.org/countries/kenya](https://data.ghs.org/countries/kenya).

Percentages presented in this brief have been rounded and may not add up to 100%.

PMA uses mobile technology and female resident data collectors to support rapid-turnaround surveys to monitor key family planning indicators in Africa and Asia. PMA Kenya is led by the Ministry of Health in collaboration with International Centre for Reproductive Health Kenya (ICRHK), National Centre for Reproductive Health, and Kenya National Bureau of Statistics. Overall direction and support are provided by the Bill & Melinda Gates Institute for Population and Reproductive Health at the Johns Hopkins University and Jhpiego. Funding is provided by the Bill & Melinda Gates Foundation.