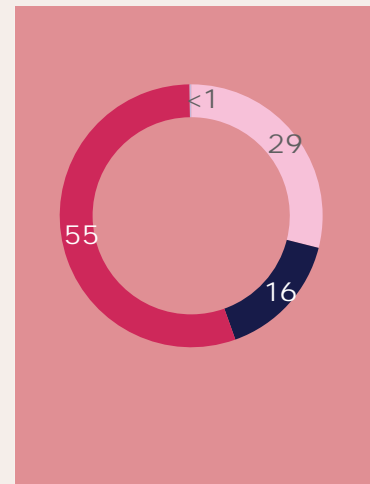
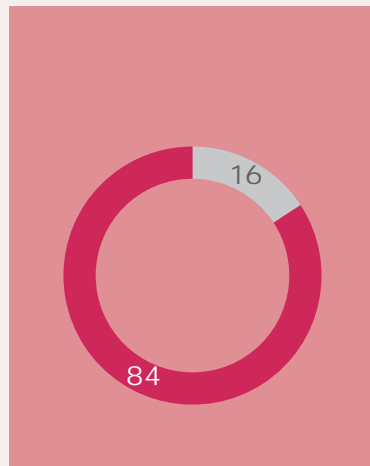
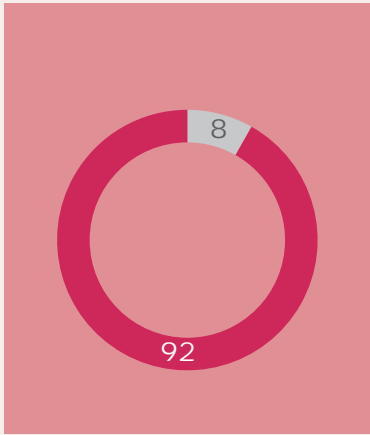
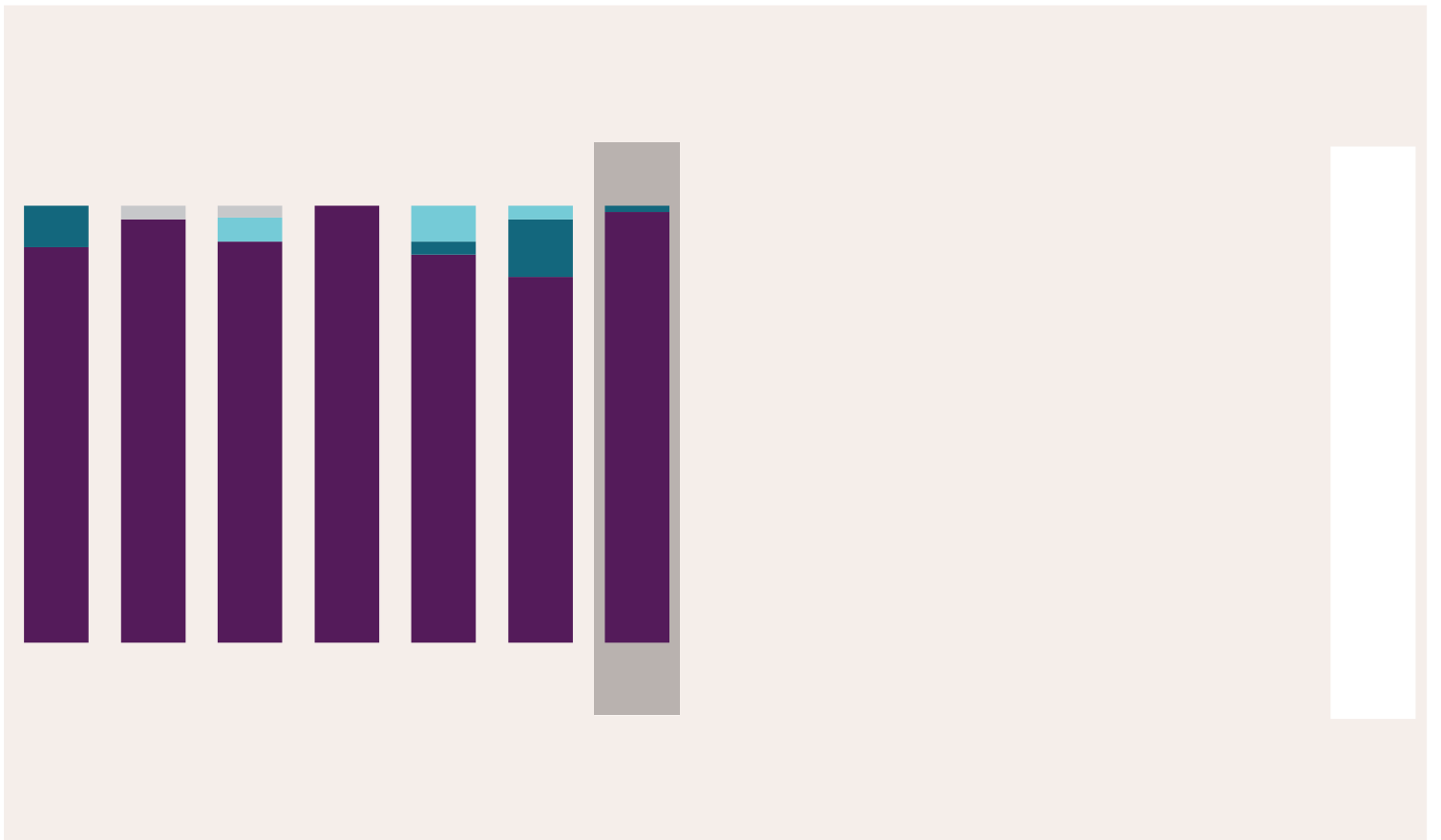


partner involvement in FP decisions

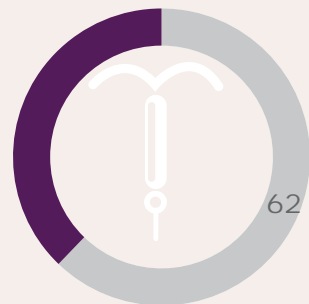
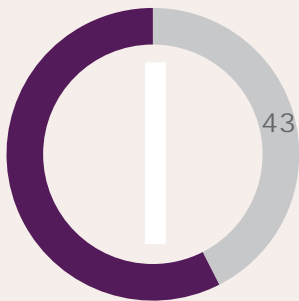






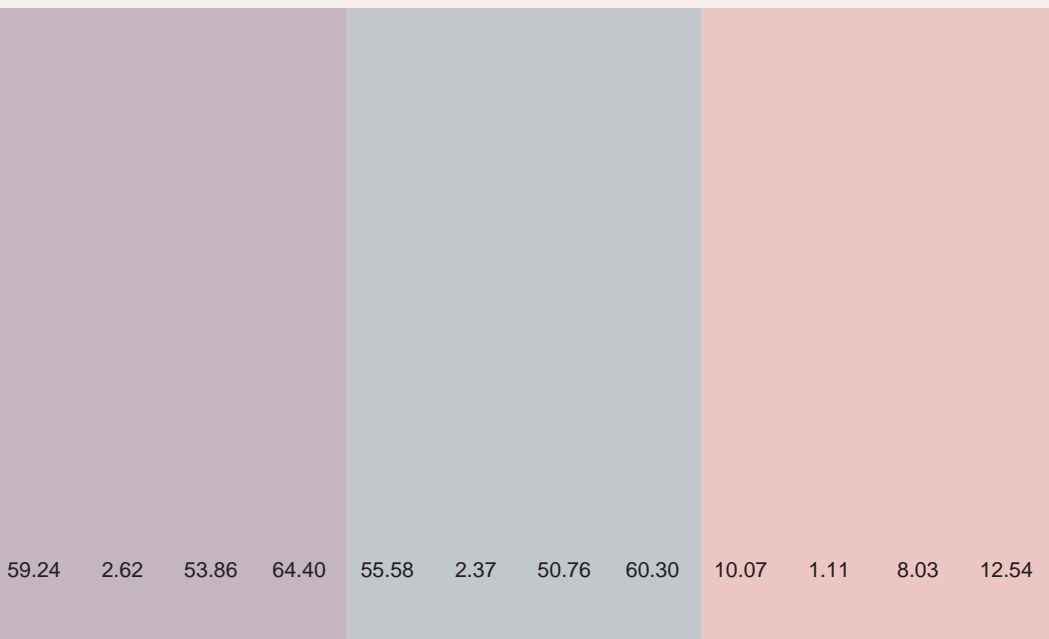
facility readiness

Percent of facilities that provide implants and have a trained provider and instruments/supplies needed for implant insertion/removal (n=80)

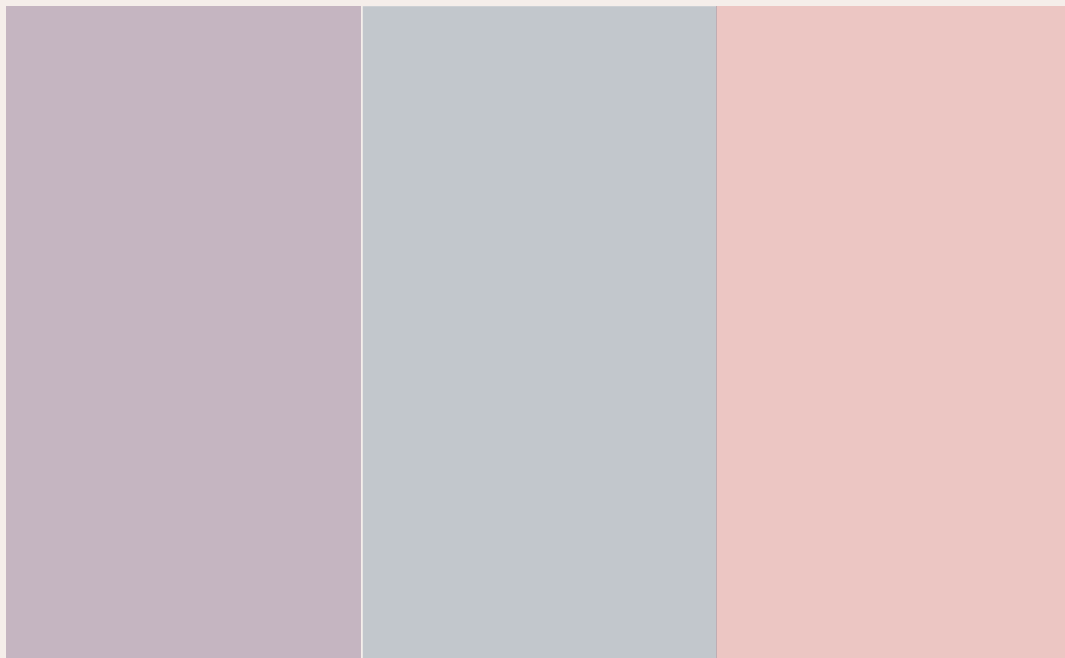


Tables: Contraceptive prevalence and unmet need

PMA Phase 2 Nov-Dec 1,215 2020



PMA Phase 2 Nov-Dec 2020



PMA Kenya (Nandi) collects information on knowledge, practice, and coverage of family planning services in 40 enumeration areas using a multi-stage household survey (98% response rate), 1,215 females age 15-49 (98% response rate), and 89 facilities (90.8% completion rate) for service provision and full data sets, visit www.pmadata.org/countries/kenya.

Percentages presented in this brief have been rounded and may not add up to 100%.

PMA uses mobile technology and female resident data collectors to support rapid-turnaround surveys to monitor key family health indicators in Africa and Asia. PMA Kenya is led by the Ministry of Health in collaboration with International Centre for Reproductive Health, Kenya National Council for Population and Development, and Kenya National Bureau of Statistics. Overall direction and support are provided by the Bill & Melinda Gates Institute for Population and Reproductive Health at the Johns Hopkins University and Jhpiego. Funding is provided by the Bill & Melinda Gates Foundation.